

## Push-Lock Connectors For Mining, Tunneling and Industry

### STANDARD FEATURES

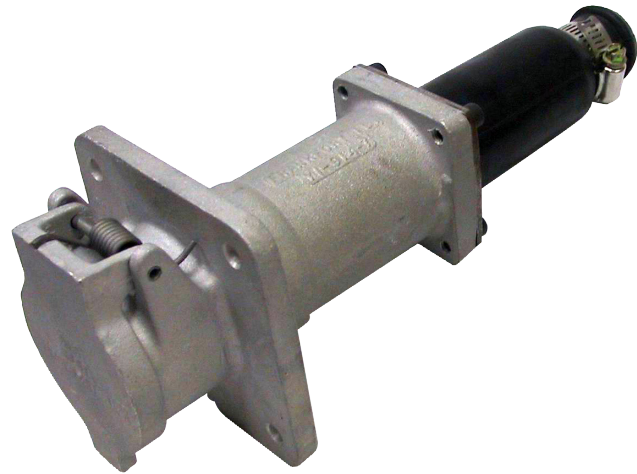
- Available attachable or molded to cable
- Locking unit
- Resilient neoprene construction
- Easily installed
- Receptacles available with covers

### PARAMETERS

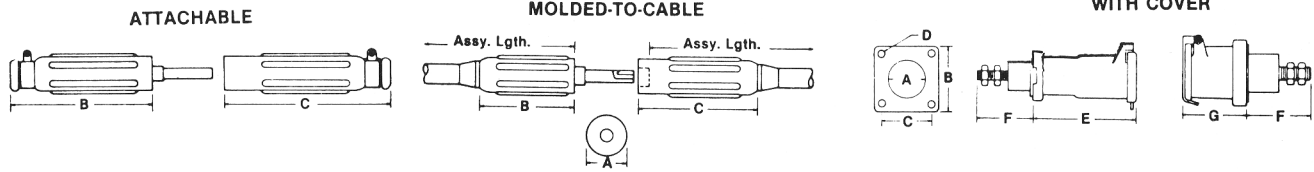
- Single contact Number 2 through 4/0 cable
- Up to 125 volts/550 amps moulded to cable
- Up to 600 volts/235 amps
- Up to 5000 volts/175 amps moulded to cable

### APPLICATIONS

- Welding leads
- Portable distribution centers
- Utility Companies - distribution centers
- Electromagnets
- Railroad
- Refineries



# Push-Lock Connectors



## DATA

## PLUG

## RECEPTACLE

Electrical Data		Part Numbers			Dimensions (Approx. Inches)			Part Numbers									
Max. AWG	Max AMP.	Assy. Length	Male	Female	A	B	C	Male	Female		A	B	C	D	E	F	G

### ATTACHABLE 600 VOLT

2	110	Attach.	8168-3	8168-2	1 3/8	4 3/4	5 9/16	8168-14	8168-10	Covered	1 1/4	1 1/2	2	7/32	4 7/16	2 7/16	2 7/16
2/0	175	Attach.	8169-3	8169-4	1 5/8	5 7/16	6 3/8	8169-31	8169-17	Covered	1 1/2	2	2 5/8	9/32	5 1/2	2 1/2	2 1/2
4/0	235	Attach.	8170-1	8170-2	1 7/8	6 15/16	7 3/8	8170-36	8170-35	Covered	1 5/8	2	2 5/8	9/32M 7/32	5 1/2	2 1/2	2 7/8
4/0	235	Attach.	8567-10	8567-18	1 7/8	6 13/16	9 5/16		8567-23	Covered	3 7/16	3	4 1/16	9/32		8 5/8	1 15/16

Male contact shrouded

For welding applications, the above will carry the same load as those listed below for corresponding wire sizes.

### MOLDED TO CABLE UP TO 125 VOLT WELDING

2/0	375	45"	8165-4	8165-5	1 1/8	4 3/16	5 3/16	8169-31	8169-17	Covered	1 1/2	2	2 5/8	9/32	5 1/2	2 1/2	2 1/2
4/0	550	45"	8166-6	8166-3	1 3/8	4 1/2	5 1/2	8170-36	8170-35	Covered	1 5/8	2	2 5/8	9/32M 7/32	5 1/2	2 1/2	2 7/8
2	110	24"	8173-1	8173-2	1 5/8	4	4 1/2		8173-13	Covered	1 1/2	2 5/8	2	9/32	2 17/32	2 1/2	
2/0	175	18"	8174-4	8174-3	1 5/8	4 1/2	5 1/4										

NOTE: Refer to price list for identification of stock items.

These are connector ratings only.

Operating ratings must be based on cable capacity.

