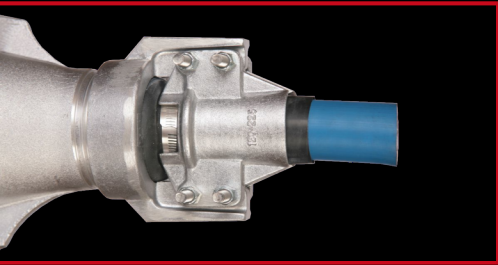
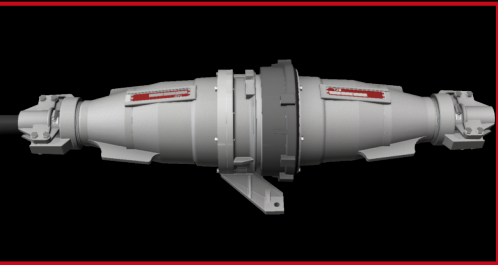
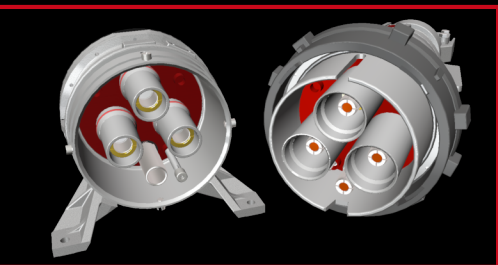


HV COUPLERS

8KV-25KV 800AMPS



From our original 4-pitch housing to the industries best no thread connectors; we have a high voltage (HV) connector that will fit your needs. All TJB HV couplers feature a durable aluminum housing with a solid polyester insulator plate and your choice of EP rubber or 100% virgin molded PTFE insulating tubes. Our unique cable entrance and extensive use of O-rings instead of flat seals, allow TJB couplers to exceed IP 67 standards for dust and water exclusion even when the cable is out of round or under sized.

TJB couplers are designed for cable as large as 535MCM and are rated for 800amps at 100% duty cycle. Our contacts do not rely on springs or the natural set of the metal that may lose temper under high heat operation, instead using a silicone button that when heated expands causing contact pressure to increase, this allows for high contact pressure when needed under high current loads and maintains a light insertion pressure when couplers are being (dis)connected.

Many features that are now considered mandatory on a cable coupler were first designed and implemented by TJB, our decades of experience along with unmatched service, including same day emergency shipping, can provide the technical support and product delivery that you need to reduce down time or prevent it all together!

Part Number Guide

P M L - N T ? ?

Housing Gender
 P= Plug
 S= Socket

Mounting Type
 L= Line/Cable
 G= Gear/
 Equipment

Closure Type
 N= No-Thread
 C= Coarse(4 pitch)

Optional Features
 Refer to factory
 for complete list

Contact Gender
 M= Male
 F= Female

Insulator Material
 T= PTFE
 H= EP Rubber